

400S/460SJ

MID-SIZE TELESCOPIC BOOM LIFTS



- Mid-size diesel telescopic boom lifts
- Available with and without a jib boom
- 4 wheel drive for excellent rough terrain performance
- Ideal for construction and industrial applications
- Simple to operate and easy to maintain

 **snorkel**[™]
www.snorkellifts.com

MID-SIZE TELESCOPIC BOOM LIFTS

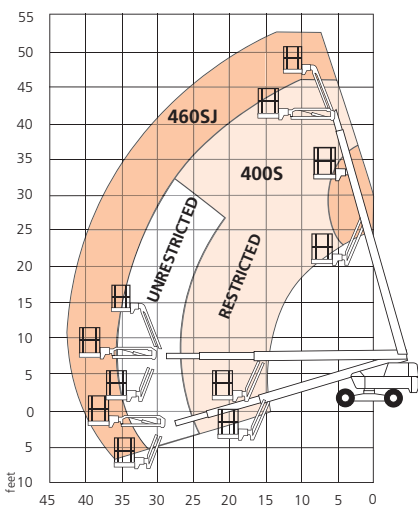
DIMENSIONS	400S	460S
Max. working height	46 ft	52 ft
Max. platform height (A)	40 ft	46 ft
Max. horizontal reach	35 ft	42 ft
Platform size	8 ft x 3 ft	8 ft x 3 ft
Overall width (B)	7 ft 7 in	7 ft 7 in
Transport width	6 ft 10 in	6 ft 10 in
Transport height	7 ft 10 in	10 ft 1 in
Transport length	24 ft 10 in	21 ft 6 in
Stowed length (C)	24 ft 10 in	28 ft 5 in
Stowed height (D)	7 ft 10 in	7 ft 10 in
Ground clearance	12.5 in	12.5 in

PERFORMANCE		
Platform capacity (SWL) unrestricted	600 lbs	600 lbs
Platform capacity (SWL) restricted	1,000 lbs	n/a
Max. wind speed	28 mph	28 mph
Max. drive height	40 ft	46 ft
Max. drive speed (stowed)	4 mph	4 mph
Max. drive speed (elevated)	0.75 mph	0.75 mph
Jib length	n/a	6 ft 6 in
Jib working arc	n/a	135°
Platform rotation	150°	150°
Superstructure rotation	360° continuous	360° continuous
Tailswing	35.5 in	35.5 in
Raise/lower time	64/64 sec	64/64 sec
Gradeability	50%	50%
Inside turning radius	9 ft 10 in	9 ft 10 in
Outside turning radius	16 ft 7 in	16 ft 7 in
Tires	355/55 D625 foam filled lug	
Controls	All proportional controls	
Drive system	4 wheel drive	

POWER		
Power source	Deutz 2.9L 49hp (36.5kW) Tier 4 Final	
Auxillary power unit	12V DC	12V DC

WEIGHT		
Weight	15,730 lbs	17,260 lbs

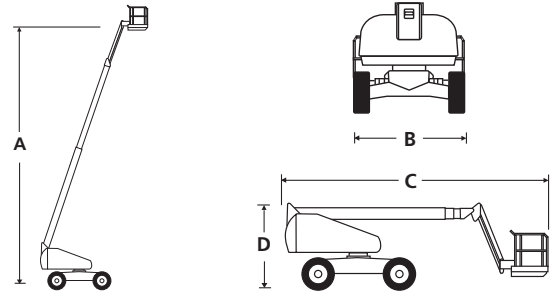
WORKING ENVELOPE



ANSI Specification
©Snorkel 2020

Specifications subject to change without notice. Photos and diagrams in this brochure are for promotional purposes only. Refer to appropriate Snorkel operators manual for detailed instructions on the proper use and maintenance.

400S/460SJ



STANDARD FEATURES

- Snorkel Guard™ secondary guarding system
- 6ft 6in 135° jib (460SJ only)
- Hydraulic platform rotation
- Four wheel drive
- All proportional controls
- Oscillating axle
- Swing-out engine tray
- Power line to platform
- Tilt alarm & cut-out
- Motion alarm
- Hour meter & on-board diagnostics display
- Horn
- Flashing amber light
- DC emergency operation
- Tri-entry platform
- 2 year parts & labor, 5 year structural warranty
- ANSI compliant

OPTIONS

- Special paint colors
- AC generator 110V/240V 2kW
- Non-marking tires
- Dual fuel
- Kubota 24.9hp diesel engine
- Airline to platform
- Aircraft package
- Deluxe aircraft package
- Cold weather package
- Extreme cold weather package
- Extreme environment package
- Light package
- Tow kit
- Glazier package
- 10kW generator package
- 10kW generator/welder package
- Environmental hydraulic oil
- Tool tray

snorkel www.snorkellifts.com

P.O. Box 1160
St. Joseph, MO 64502-1160, USA
Tel: 1 (785) 989-3000
Toll-free: 1 (800) 255-0317
Fax: 1 (785) 989-3070
Email: sales.usa@snorkellifts.com

02/2020