



518 REACH



- **5,500 LBS. CAPACITY**
- **18 FEET 4 INCHES OF LIFT HEIGHT**
- **COMPACT, MANEUVERABLE DESIGN**
- **EXCELLENT OPERATOR VISIBILITY**
- **ROOMY, COMFORTABLE OPERATORS MODULE**
- **ERGONOMIC CONTROLS**
- **FULL RANGE OF ATTACHMENTS AVAILABLE**
- **NORTH AMERICAN MANUFACTURED**



LOAD LIFTER FEATURES DO WORK FOR YOU

PERFORMANCE

Rated Capacity	5,500 lb	2,495 kg
Maximum Lift Height	18 ft 4 in.	5.6 m
Load at Max Height	4,400 lb	1,996 kg
Maximum Forward Reach	10 ft 11 in.	3.3 m
Load at Max Reach	1,850 lb	839 kg
Lift Speed (boom retracted)		
Up	6.8 sec	
Down	4.6 sec	
Boom Speed (extended/retracted)		
Extended	6.7 sec	
Retracted	3.8 sec	
Top Travel Speed (4-Speed)	15 mph	24 kph
Drawbar Pull (loaded)	8,700 lb	3,946 kg
Outside Turning Radius	127 in.	3.2 m
Operating Weight	11,000 lb	4,990 kg

STANDARD SPECIFICATIONS

Engine

Make and Model	Deutz TD 2.9 L L4	
No. of Cylinders	4	
Displacement	177 cu in.	2.9 L
Gross Power Basic	74 hp	55 kW
Maximum Torque @ 1800 rpm	192 lb-ft	260 Nm
Fuel Tank Capacity	24 gal	91 L

Transmission

- Hydrostatic

Axles

- High bias limited slip differential on front axle.
- Planetary on front and rear axles.

Brakes

- Service brakes are inboard wet disc brake on front axle.
- Parking brakes are wet disc spring-applied hydraulic release.

Tires

- Standard 12 × 16.5 Pneumatic
- Optional 12 × 16.5 Foam-Filled
- 14 × 17.5 Foam-Filled
- 14 × 17.5 Pneumatic
- 33 × 12 Solid

Cab

- Certified ROPS/FOPS structure
- Adjustable suspension seat
- Horn

Steering 4-Wheel

- Operator selectable 4-wheel circle, 4-wheel crab, 2-wheel front.

Instruments

- Hourmeter
- Steering mode
- Engine coolant temperature
- Fuel gauge
- Alternator gauge
- Parking brake indicator
- Travel speed
- Engine speed
- Vehicle and engine system indicators, including fault codes

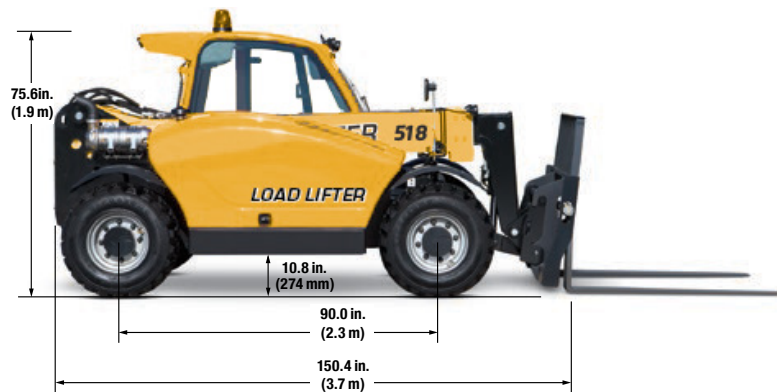
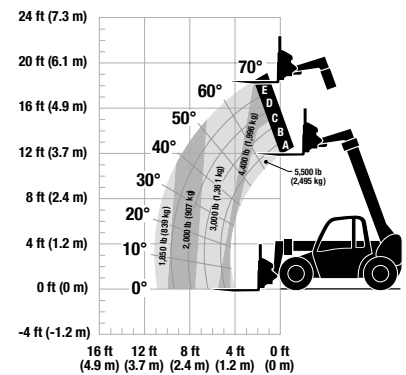
Hydraulic System-Implement

- Capacity 24 gal 91 L
- Single-section gear pump.
- Auxiliary hydraulics used for all attachments equipped with cylinders or other hydraulic components.

Dimensions



Load Chart and Dimensions



ACCESSORIES & OPTIONS

- Enclosed Cab
- Battery Disconnect Switch
- Road Light Package
- Work Light Package
- Skylight/Rear Wiper Package
- Radio Ready Kit (Enclosed Cab Only)
- Tow Hitch w/trailer plug
- Tow Hitch w/automatic pin & trailer plug
- Molded Floor Mat
- Fenders
- Brick Guard
- Air Conditioning
- Block Heater
- Tilt Steering
- Hydraulic Quick Switch
- Rear Auxiliary Hydraulics
- Universal Skid Steer Coupler
- Boom brushes
- Reversing fan
- Pre-cleaner

ATTACHMENTS

Standard Carriage	50 in. 1.3 m	
Side-Tilt Carriage	48 in. 1.2 m	
Pallet Forks	2 in. × 4 in. × 48 in.	51 mm × 102 mm × 1.2 m
Lumber Forks	1.5 in. × 6 in. × 60 in.	38 mm × 152 mm × 1.5 m
Cubing Forks	2 in. × 2 in. × 48 in.	51 mm × 51 mm × 1.2 m
General Purpose Bucket	73 in., 1.0 cu yd	1.85 m, 0.76 m ³
Light Material Bucket	72 in., 1.7 cu yd	1.8 m, 1.29 m ³
Grapple Bucket	72 in., 1.0 cu yd	1.8 m, 0.76 m ³
Lifting Hook		

This information contained herein is general in nature and not intended for specific application purpose. Load Lifter reserves the right to make changes in specifications, make improvements, or discontinue manufacture at any time without notice or obligation.



LOAD LIFTER MANUFACTURING LTD.
 3 Anderson Blvd. Stouffville
 Ontario, Canada L4A 7X4
 Tel. 416-291-9756, Fax. 416-297-4034
www.load-liftermfg.com, info@load-liftermfg.com



642-H REACH



642-H SHOWN WITH OPTIONAL SOLID TIRES

- 6,000 LBS CAPACITY
- 42 FOOT LIFT HEIGHT
- 360 DEGREE OPERATOR VISIBILITY
- ADVANCED LOAD SENSE HYDRAULIC SYSTEM
- ROPS, FOPS ERGONOMIC OPERATORS MODULE
- LOW PROFILE DESIGN
- HIGH STRENGTH BOOM ASSEMBLY
- WELDED BOX FRAME STRUCTURE
- STABLE, RESPONSIVE, PERFORMANCE
- NORTH AMERICAN MANUFACTURED

LOAD LIFTER FEATURES DO WORK FOR YOU

SPECIFICATIONS

CAPACITY

2722 kg (6000 lbs)

ENGINE

Make PERKINS 854F-E34T
 Displacement 3.4 LITRES / 207.5 CU IN.
 Gross H.P. 74.3 / (55KW)
 Maximum Torque 291 NM. @ 1600 RPM / (214.6 lb-ft)
 Rated Speed 2500 RPM.

TRANSMISSION

Type Dana T12,000 Series
 Speeds 1st - 3.7mph (5.9km/h)
 2nd - 7.1 mph (11.4 km/h)
 3rd - 18 mph (29.0 km/h)

AXLES

Dana Outboard Planetary Drive System

DRIVE SYSTEM

Full Time 4 Wheel Drive

STEERING

2 Wheel, 4 Wheel & Crab

BRAKES

Full Power Oil Immersed Disc Brakes

TIRES

13.00-24 12 ply
 Lug Tread Tubeless

HYDRAULIC SYSTEM

Pump Load Sense System
 Pump Flow Variable Displacement Piston Pump
 Steering Full Load Sense System
 Filtration 10 Micron Filter

ELECTRICAL SYSTEM

12 Volt Negative Ground
 100 Amp Alternator
 600 cca Battery

FLUID CAPACITIES

Cooling System 11.5 Liters (12.2 Qts.)
 Engine Oil 6.8 Liters (7.2 Qts.)
 Fuel Tank 134 Liters (35 Gal)
 Hydraulic Tank 169 Liters (44 Gal)
 Transmission 12.9 Liters (3.4 Gal)
 Axle Individual Hub 1.4 Liters (0.37 Gal)
 Center Housing Front 6.7 Liters (1.75 Gal)
 Center Housing Rear 7.7 Liters (2.0 Gal)

DIMENSIONS

Overall Length (Less Forks) 554 cm (218 in.)
 Overall Width 258 cm (101.5 in)
 Wheelbase 317.5 cm (125 in)
 Height (top of canopy) 226 cm (89 in)
 Ground Clearance 40 cm (15.75 in)
 Outside Turning Radius 419cm (165 in)

FRAME

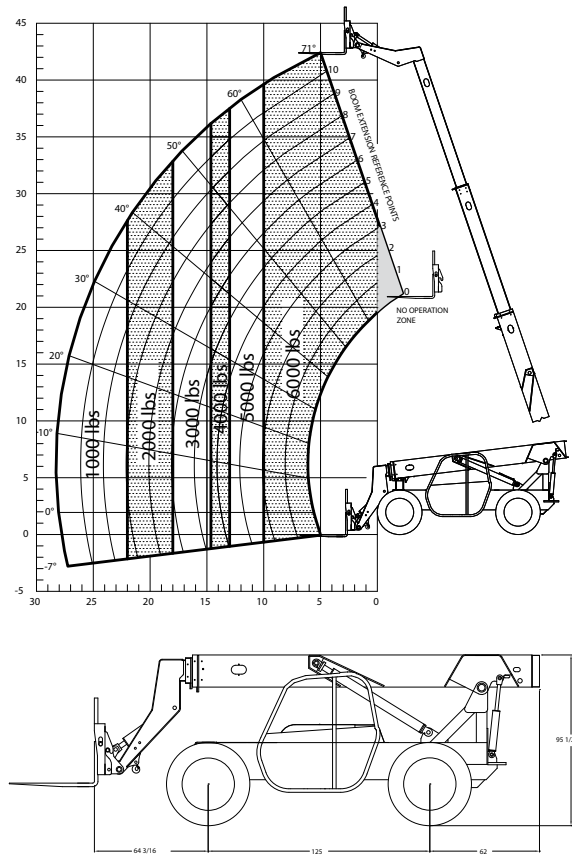
Hydraulic Load Leveler Frame Boom High Tensile Steel Box Frame Structure
 22° Frame Leveling
 Welded Box Construction, High Strength, Low Alloy Steel
 3 Section Slider
 Type Nylatron wear pads
 Load Bearing Material 8.6m (28'2") face of tires to load center
 Max. reach (Boom Level) 8.5m (27'11")face of tires to load center
 Reach (ground level)
 Boom extend speed 15.8s
 Boom retract speed 11s
 Boom raise 7.5s
 Boom Lower 86cm (2'10")
 Max reach below grade

CARRIAGE

121.9cm (48") SHAFT
 Tilt Forward 22°
 Tilt Back 8°
 Forks 5.1cm x 12.7cm x 121.9cm(2" x 4" x 48")
 Automatic Self Leveling Manual Override

SHIPPING WEIGHT

9,004 kg (19,850 lbs)



STANDARD EQUIPMENT

- Safety Start
- L.E.D. INSTRUMENT DISPLAY (Hour Meter, Fuel Level, Coolant Temp, Alt, Pre Heater, Oil Pressure Gauge, Low Oil Press Warning, Trans Temp, Work Light Indicator, Park Brake, Work Light Switch)
- Backup alarm
- Block Heater, 110V
- Single 600 cca battery
- Antifreeze -40°C
- Operating lights
- Tool box
- 1300-24 12 ply tubeless tires
- Chain tie downs
- Frame level indicator
- Parking brake
- Adjustable suspension seat
- Seat belt
- Right side mirror
- Overhead canopy
- Reach "Pro-Attach" system
- 48" Masonry carriage
- Lifting hook

OPTIONAL EQUIPMENT

- All steel cab c/w Front and rear wipers, heater and RHS slider window
- Truss jib
- Utility bucket
- Concrete hopper
- Snow blade
- Side tilting carriage
- Fenders
- Compressor c/w aux outlet
- Various width Carriages
- Defrost fan
- Vandalism protection
- Transmission disconnect
- Air ride seat
- Turn signals
- Matched set padlocks
- Dual 600 cca batteries
- 15.5 x 25 12 Ply Tires
- 440/80R/24 IT520 Tires



This information contained herein is general in nature and not intended for specific application purpose. Load Lifter reserves the right to make changes in specifications, make improvements, or discontinue manufacture at any time without notice or obligation.

LOAD LIFTER MANUFACTURING LTD.

3 Anderson Blvd., Stouffville, Ontario, Canada, L4A 7X4

Tel. 905-642-9756, Fax. 905-640-1437, www.load-liftermfg.com, info@load-liftermfg.com



842-H REACH



- 8,000 LBS CAPACITY
- 42 FOOT LIFT HEIGHT
- 360 DEGREE OPERATOR VISIBILITY
- ADVANCED LOAD SENSE HYDRAULIC SYSTEM
- ROPS, FOPS ERGONOMIC OPERATORS MODULE
- LOW PROFILE DESIGN
- HIGH STRENGTH BOOM ASSEMBLY
- WELDED BOX FRAME STRUCTURE
- STABLE, RESPONSIVE, PERFORMANCE
- NORTH AMERICAN MANUFACTURED

LOAD LIFTER FEATURES DO WORK FOR YOU

SPECIFICATIONS

CAPACITY

3629Kg (8000 lbs)

ENGINE

Make PERKINS 854F-E34T
Displacement 3.4 LITRES / 207.5 CU IN.
Gross H.P. 74.3 / (55KW)
Maximum Torque 291 NM. @ 1600 RPM / (214.6 lb-ft)
Rated Speed 2500 RPM.

TRANSMISSION

Type Dana T12,000 Series
Speeds 1st – 3.7mph (5.9km/h)
2nd – 7.1 mph (11.4 km/h)
3rd – 18 mph (29.0 km/h)

AXLES

Dana Outboard Planetary Drive System

DRIVE SYSTEM

Full Time 4 Wheel Drive

STEERING

2 Wheel, 4 Wheel & Crab

BRAKES

Full Power Oil Immersed Disc Brakes

TIRES

13.00-24 12 ply
Lug Tread Tubeless

HYDRAULIC SYSTEM

Pump Load Sense System
Pump Flow Variable Displacement Piston Pump
Steering Full Load Sense System
Filtration 10 Micron Filter

ELECTRICAL SYSTEM

12 Volt Negative Ground
65 Amp Alternator
600 cca Battery

FLUID CAPACITIES

Cooling System 11.5 Liters (12.2 Qts.)
Engine Oil 6.8 Liters (7.2 Qts.)
Fuel Tank 134 Liters (35 Gal)
Hydraulic Tank 169Liters (44 Gal)
Transmission 12.9 Liters (3.4 Gal)
Axle Individual Hub 1.4 Liters (0.37 Gal)
Center Housing Front 6.7 Liters (1.75 Gal)
Center Housing Rear 7.7 Liters (2.0 Gal)

DIMENSIONS

Overall Length (Less Forks) 554 cm (218 in.)
Overall Width 258 cm (101.5 in)
Wheelbase 317.5 cm (125 in)
Height (top of canopy) 226 cm (89 in)
Ground Clearance 40 cm (15.75 in)
Outside Turning Radius 419cm (165 in)

FRAME

Hydraulic Load Leveler Frame Boom High Tensile Steel Box Frame Structure
22° Frame Leveling

Type

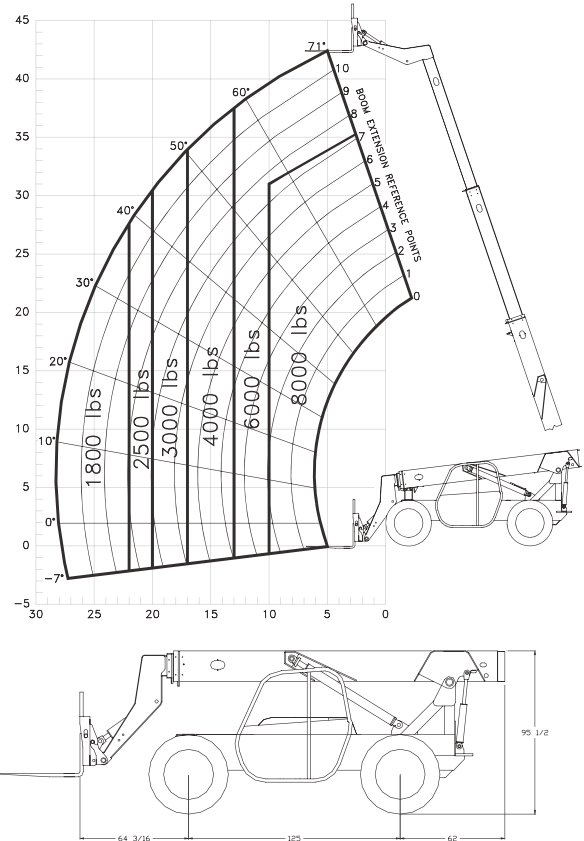
Load Bearing Material 3 Section Slider
Max. reach (Boom Level) Nylatron wear pads
Reach (ground level) 8.6m (28'2") face of tires to load center
Boom extend speed 8.5m (27'11")face of tires to load center
Boom retract speed 15.8s
Boom raise 11s
Boom Lower 7.5s
Max reach below grade 86cm (2'10")

CARRIAGE

Tilt Forward 121.9cm (48") SHAFT
Tilt Back 22°
Forks 8°
Automatic Self Leveling 5.1cm x 12.7cm x 121.9cm (2"x 5"x 48")
Manual Override

SHIPPING WEIGHT

10,660kg (23,500 lbs)



STANDARD EQUIPMENT

- Safety Start
- L.E.D. INSTRUMENT DISPLAY (Hour Meter, Fuel Level, Coolant Temp, Alt, Pre Heater, Oil Pressure Gauge, Low Oil Press Warning, Trans Temp, Work Light Indicator, Park Brake, Work Light Switch)
- Backup alarm
- Block Heater, 110V
- Single 600 cca battery
- Antifreeze -40°C
- Operating lights
- Tool box
- 1300-24 12 ply tubeless tires
- Chain tie downs
- Frame level indicator
- Parking brake
- Adjustable suspension seat
- Seat belt
- Right side mirror
- Overhead canopy
- Reach "Pro-Attach" system
- 48" Masonry carriage

OPTIONAL EQUIPMENT

- All steel cab c/w Front and rear wipers, heater and RHS slider window
- Truss jib
- Utility bucket
- Concrete hopper
- Snow blade
- Side tilting carriage
- Fenders
- Compressor c/w aux outlet
- Various width Carriages
- Defrost fan
- Vandalism protection
- Transmission disconnect
- Air ride seat
- Turn signals
- Matched set padlocks
- Dual 600 cca batteries
- 15.5 x 25 12 Ply Tires
- 440/80R/24 IT520 Tires



This information contained herein is general in nature and not intended for specific application purpose. Load Lifter reserves the right to make changes in specifications, make improvements, or discontinue manufacture at any time without notice or obligation.

LOAD LIFTER MANUFACTURING LTD.

3 Anderson Blvd., Stouffville, Ontario, Canada, L4A 7X4

Tel. 905-642-9756, Fax. 905-640-1437, www.load-liftermfg.com, info@load-liftermfg.com



1056-H REACH



- 10,000 LBS. CAPACITY
- 56 FOOT LIFT HEIGHT
- 360 DEGREE OPERATOR VISIBILITY
- ADVANCED LOAD SENSE HYDRAULIC SYSTEM
- R.O.P.S, F.O.P.S ERGONOMIC OPERATORS MODULE
- LOW PROFILE DESIGN
- HI STRENGTH BOOM ASSEMBLY
- WELDED BOX FRAME STRUCTURE
- STABLE, RESPONSIVE, PERFORMANCE
- NORTH AMERICAN MANUFACTURED
- FULL RANGE OF ATTACHMENTS



LOAD LIFTER FEATURES DO WORK FOR YOU

PERFORMANCE

Rated Capacity @ 24" Load Centre	10,000 lb.	4536 kg
Maximum Lift Height	56 ft.	17.07 m
Load At Maximum height	56' 6,000 lb. with stabilizers down	
Maximum Forward Reach	42'3"	12.83 m
Load At Maximum Reach	42'3" 3,000 lb. stabilizers down	
Lift speed (boom retracted)	Lift 15.04 sec	Lower 13.79 sec
Extend	20.47	
Retract	14.37	
Turning Radius	15'	4.57 m
Top Travel speed	13.9 mhp	22.37 kph
Carriage: Forward Tilt 80 degrees Backward: 20 degrees Width: 48"		

DIMENSIONS

Width 102"	Length 277"	Height 99"
Wheel Base 138"	Ground Clearance 17"	Weight (Basic) 34,200 LB.

ENGINE

MAKE	PERKINS 854F-E34TA-F2F	
DISPLACEMENT	3.4 LITRES	207.5 CU IN.
GROSS H.P.	121	(90KW)
MAX TORQUE	490 NM. @ 1400 RPM	(664.6 lb-ft)
RATED SPEED	2200 RPM	

TRANSMISSION

Dana T20,000
Three Speed Electric column shift

AXLES

Dana: Heavy duty planetary drive. Full time four wheel drive

BRAKES

Full power hydraulic oil immersed, fail safe disc brakes

TIRES

Standard 14.00 x 24 - 16 PLY LUG

CAB

Certified R.O.P.S./ F.O.P.S. Large ergonomic operators module, Industry leading visibility, Excellent operator entry and exit.

STEERING

Operator select, 4-wheel circle, 4-wheel crab, 2-wheel rear, Full load sense steering, Anti-shock valve in steering

HYDRAULICS

Load sense system, Variable displacement piston pump, 38 G.P.M., Load sense steering, 10 Micron filter. Parker I-QAN system.

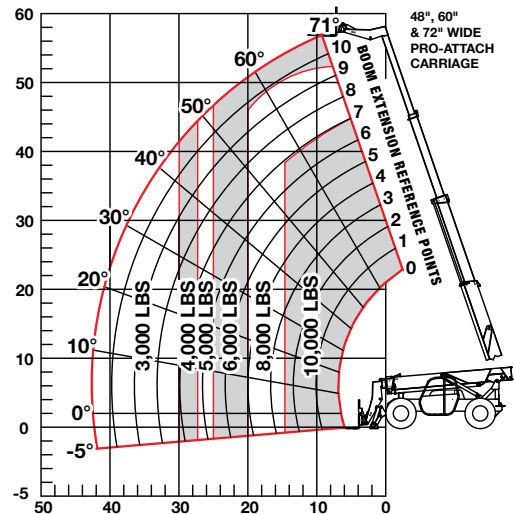
FRAME

Heavy duty box frame structure. 20 Degrees hydraulic frame leveling. Hydraulically actuated front stabilizers.

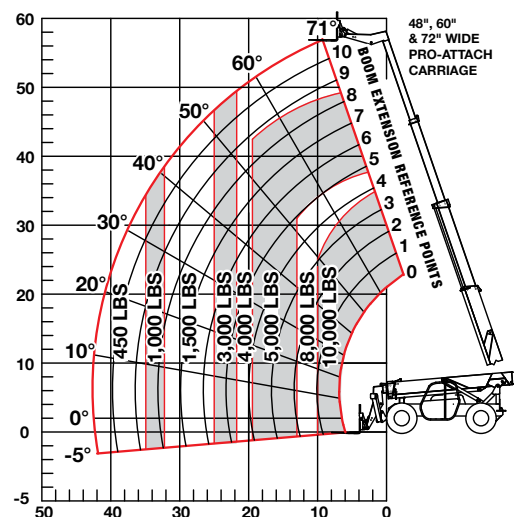
STANDARD EQUIPMENT

• R.O.P.S. & F.O.P.S. Operator module, Single Joystick control • Suspension seat • Retractable seat belt • Tilt & telescopic steering console • L.E.D. Instrument Display: Fuel Level, Oil Pressure Level, Water Temp Level, Alternator IND., Low Oil Pressure IND., Park Brake IND., Preheat IND., Signal IND., Work Light IND., Transmission Temp IND., Park Brake IND., MC2 Fault IND. light. • Safety start • Block heater • Circuit breakers & Rocker switch's • Hour Meter • Work Light Switch • 4 Work lights 2 front 2 rear • Electric horn • Chain Tie downs • Dry type air cleaner • Vandalism protection • Back up alarm • Heavy-duty batteries • Right side rear view mirror • Antifreeze to -40° • Frame level indicator • Automatic self-leveling carriage with manual override • Reach pro-attach system • 48 Inch Shaft Type Carriage • 2.25 x 5" x 48" Shaft pallet forks • Tool box • Operators and safety manuals.

**LOAD LIFTER 1056-H REACH
LOAD CHART (STABILIZERS DOWN)**



**LOAD LIFTER 1056-H REACH
LOAD CHART (STABILIZERS UP)**



OPTIONAL EQUIPMENT

- Factory installed all weather steel cab C/W Heavy duty heater with directional vents, Dome light, Tempered safety glass, Removable door, front & rear wipers, Right hand side slider window.
- Air compressor • Windshield washer kit • Turn signals • Boom light • Air ride seat • Defrost fan • Padlocks • L.E.D. lights • Strobe light • Fenders • Winterization package • Auxiliary hydraulic circuit.

Attachments.

- 60", 72" & 84" floating pin carriages
- 48" & 60" Side tilt masonry carriages
- Side shifting carriage
- Utility Bucket 84"
- Truss boom 10' & 12'

Forks 2.25 x 5 x 60" & 2.25 x 5x 72" & 2.25 x 5 x 84" Lumber forks

This information contained herein is general in nature and not intended for specific application purpose. Load Lifter reserves the right to make changes in specifications, make improvements, or discontinue manufacture at any time without notice or obligation.

LOAD LIFTER MANUFACTURING LTD.

3 Anderson Blvd., Stouffville, Ontario, Canada, L4A 7X4

Tel. 905-642-9756, Fax. 905-640-1437, www.load-liftermfg.com, info@load-liftermfg.com

