

### Specifications

Models	S-40 HF		S-45 HF	
Measurements	US	Metric	US	Metric
Working height maximum*	45 ft 6 in	13.87 m	50 ft 6 in	15.39 m
Platform height maximum	39 ft 6 in	12.04 m	44 ft 6 in	13.56 m
Horizontal reach maximum	28 ft 11 in	8.81 m	34 ft	10.36 m
Below ground reach	1 ft	0.30 m	4 ft 2 in	1.27 m
<b>A</b> Platform length - 8 ft model	3 ft	0.91 m	3 ft	0.91 m
Platform length - 6 ft model	2 ft 6 in	0.76 m	2 ft 6 in	0.76 m
<b>B</b> Platform width - 8 ft model	8 ft	2.44 m	8 ft	2.44 m
Platform width - 6 ft model	6 ft	1.83 m	6 ft	1.83 m
<b>C</b> Height - stowed	8 ft 3 in	2.54 m	8 ft 3 in	2.51 m
<b>D</b> Length - stowed	26 ft 4 in	8.03 m	31 ft 1 in	9.47 m
<b>E</b> Width - high float tires	8 ft 5 in	2.56 m	8 ft 5 in	2.56 m
<b>F</b> Wheelbase	8 ft 1 in	2.46 m	8 ft 1 in	2.46 m
<b>G</b> Ground clearance - center	12.5 in	32.0 cm	12.5 in	32.0 cm

### Productivity

Lift capacity	600 lb	272 kg	600 lb	272 kg
Platform rotation	160° (70°/90°)		160° (80°/80°)	
Vertical jib rotation	—		133° (+79°/-54°)	
Turntable rotation	360° continuous		360° continuous	
Turntable tailswing	36 in	0.91 m	36 in	0.91 m
Drive speed - stowed	4.0 mph	6.4 km/h	4.0 mph	6.4 km/h
Maximum slope rating**	45%		45%	
Turning radius - inside	6 ft 9 in	2.06 m	6 ft 9 in	2.06 m
- outside	17 ft 3 in	5.26 m	17 ft 3 in	5.26 m
Controls	12 V DC proportional		12 V DC proportional	
Tires - high flotation	33/16LL 500, 10 ply, 19.5 in wheel		33/16LL 500, 10 ply, 19.5 in wheel	
Tilt sensor activation	front to back: 7° and side to side: 5°			

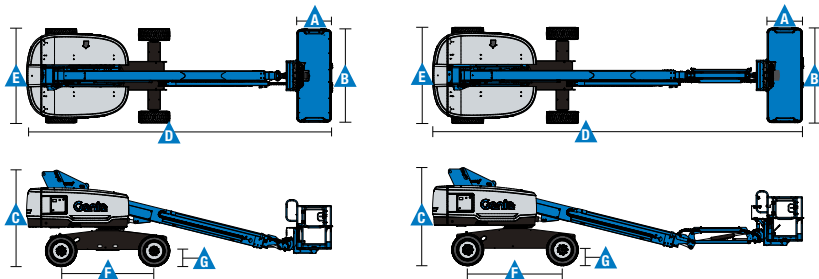
### Power

Power source	49 hp (35.79 kW) Perkins diesel T4f 404F-E22T 49 hp (36.54 kW) Deutz diesel T4f D2.9L4 60hp (44.74kW) Ford gas/LPG MSG425			
Auxiliary power unit	12 V DC		12 V DC	
Hydraulic tank capacity	38 gal	144 L	38 gal	144 L
Fuel tank capacity	35 gal	132 L	20 gal	76 L

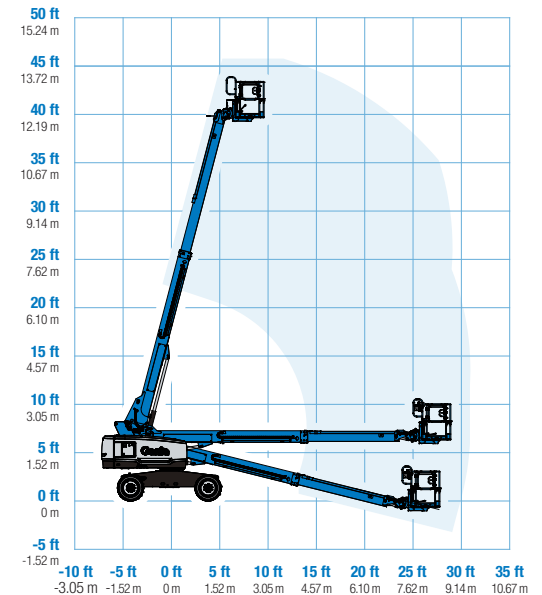
### Weight\*\*\*

Standard	13,544 lb	6,143 kg	15,720 lb	7,130 kg
----------	-----------	----------	-----------	----------

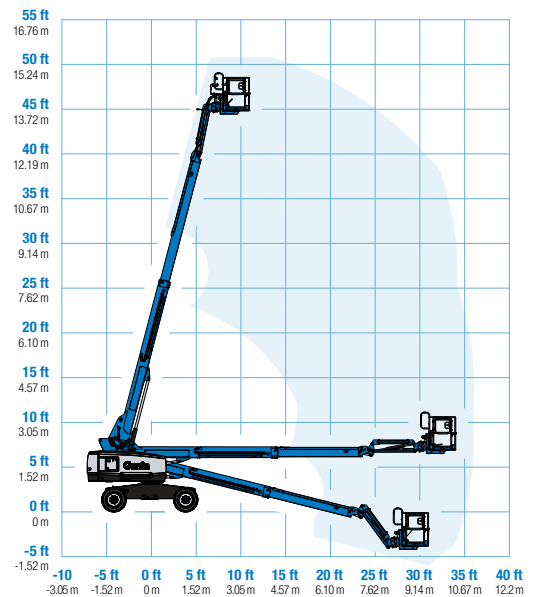
Standards Compliance ANSI A92.20, CSA B354.6 and EN280:2013 + A1:2015



### Range Of Motion S-40 HF



### Range Of Motion S-45 HF



\* The metric equivalent of working height adds 2 m to platform height. U.S. adds 6 ft to platform height.

\*\* Gradeability applies to driving on slopes. See operator's manual for details regarding slope ratings.

\*\*\* Weight will vary depending on options and/or country standards.

### Features

#### Standard Features

##### Measurements

##### S-40 HF

- 45 ft 6 in (13.87 m) working height
- 28 ft 11 in (8.81 m) horizontal reach
- 600 lb (272 kg) lift capacity

##### S-45 HF

- 50 ft 6 in (15.39 m) working height
- 34 ft (10.36 m) horizontal reach
- 600 lb (272 kg) lift capacity

##### Productivity

- High flotation air filled tires
- 4WD
- Active oscillation, 4WD
- Self-leveling platform
- 160° hydraulic platform rotation
- Proportional joystick controls
- Fuel select switch on platform and ground control panels (Gas/LPG models)\*
- Drive enable
- AC power cord to platform
- Horn
- Hour meter
- Tilt alarm
- Descent alarm
- 360° continuous turntable rotation
- Locking turntable covers
- Positive traction drive
- Two speed wheel motors
- Entry Toeboard
- Lift Guard™ Contact Alarm
- Lift Tools Work Tray
- Hydraulic oil cooler
- Alarm package (flashing beacon and travel alarm)

##### Power

- 12 V DC auxiliary power
- Anti-restart engine protection
- Auto engine fault shutdown
- Intake air heater (Deutz engine)

#### Easily Configured To Meet Your Needs

##### Platform Options

- Steel 8 ft (2.44 m) tri entry with side swing gate (standard)
- Steel 6 ft (1.83 m) dual entry with side swing gate

##### Jib Options

- Non-jib (S-40 HF only)
- 5 ft (1.52 m) jib boom (S-45 HF only)

##### Engine Options

- 49 hp (36.54 kW) Deutz diesel T4f\* (standard)
- 48 hp (35.79 kW) Perkins diesel T4f\*
- 60hp (44.74kW) Ford Gas/LPG Dual Fuel



#### Options & Accessories

##### Productivity Options

- Lift Power
  - 3 kW AC Generator
  - 12 kW 240 V / 60 Hz Welder Ready package
  - 12 kW Welder Equipped, Select Lincoln or Miller (12 kW options include a fire extinguisher and fireproof sleeves)
- Lift Guard Platform Mesh - Half
- Lift Guard Platform Mesh - Full
- Lift Guard Platform Mesh - Screen (8ft platform only)
- Platform top auxiliary rail
- Thumb rocker steer
- Air line to platform
- Specialty hydraulic oil (cold weather, fire resistant, or biodegradable)
- Hostile environment kit, standard or deluxe
- Panel cradle package
- Lockable platform control box covers
- Tow package
- Work light package
- Operator Protective Structure\*\*\*
- Fall Arrest Bar
- Positive Air Shutoff System
- Fluorescent tube caddy\*\*
- Pipe cradle\*\*

##### Power Options

- Engine gauge package
- Cold Weather Packages
- Diesel scrubber/muffler (catalytic muffler, Tier 4i only)
- LPG tank 33.5 lb (15.19 kg) capacity
- Intake air pre-cleaner (Tier 4i only)

\* Also available as Tier 4i in limited regions

\*\* Available through aftermarket parts only

#### Genie United States

6464 185th Ave. NE  
Redmond, WA 98052  
Telephone +1 (425) 881-1800  
Toll Free in USA/Canada +1 (800)-536-1800  
Fax +1 (425) 883-3475

#### Distributed By: