

Travel in multiple directions with electronically-controlled all-wheel steering

Generously-sized operator seat

Jungheinrich® curveCONTROL for advanced stability during cornering

Hydraulic fork positioner for different load widths (optional)



ETV Q20 / ETV Q25

Electric multi-directional forklift (4,400 / 5,500 lbs.)

Jungheinrich multi-directional reach trucks are used wherever long items are carried down narrow aisles and need to be lifted to taller storage elevations. These units, with electric all-wheel steering, allow for loads of up to 26 feet in length to be transported, maximizing space in the warehouse.

There are five steering modes available: from normal travel, to modified normal travel, to diagonal travel, to circular travel (turning on the spot), to parallel travel. In the "modified normal travel" mode, the already small turning radius is reduced further by simultaneous load wheel steering. The advantages of 360° steering are also available: providing minimal turning radius and fastest possible change of direction of travel. This makes the ETV Q series clearly superior to any multi-directional side loader truck.

Effortless, intuitive handling with ergonomically arranged display and controls matched with outstanding visibility makes operating the truck straightforward. In addition, assistance systems increase productivity:

- Jungheinrich curveCONTROL reduces the maximum travel speed when cornering, depending on the steer angle.
- Weighing systems provide weight monitoring at the push of a button.
- Mast reach cushioning reduces mast sway during stacking and retrieval operations, thereby increasing throughput.

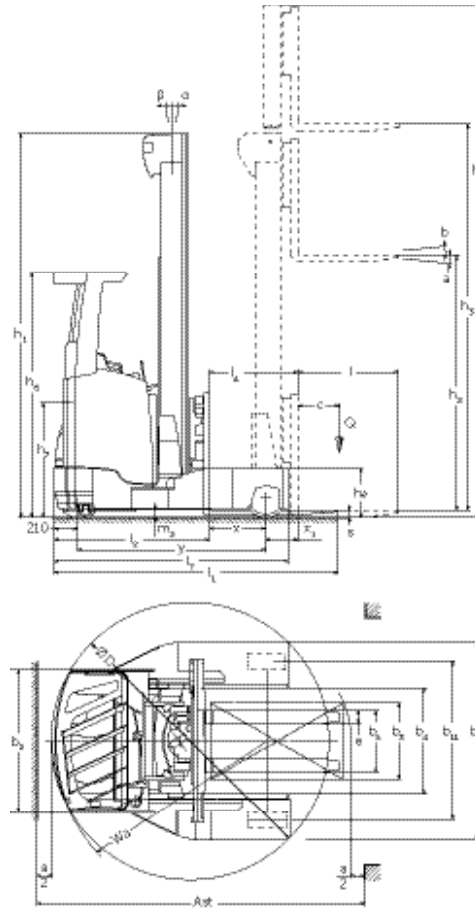
In addition to excellent performance, the truck offers outstanding efficiency:

- Higher performance in travel and lift for more pallet turnover.
- Long operating times due to energy recovery on braking the truck.
- Less aisle width required as a result of the proven reach principle.

A range of options and battery compartment sizes provide customers with the flexibility to choose the right truck to fit their application.

**JUNGHEINRICH®**

ETV Q20 / ETV Q25



Note: Equipping this model (these models) with a power source (e.g. Lithium-ion, Hydrogen Fuel cell, etc.) that has not been previously approved by the factory is considered a modification. Per OSHA 1910.178 and ANSI/ITSDF B56.1, please consult with your factory representative prior to installing any non-OEM power source that has not been previously approved.

Mast Table ETV Q20 / ETV Q25

	Lift height		Collapsed mast height		Free Lift		Extended mast height		Mast Tilt	Fork Tilt
	h_2		h_1		h_2^*		h_1^*		forward / backward	forward / backward
	in	mm	in	mm	in	mm	in	mm	α°/β°	α°/β°
Three-stage mast DZ (Full free-lift)	167	4,250	81	2,050	41	1,050	207	5,250	1 / 5	—
	185	4,700	87	2,200	47	1,200	225	5,700	1 / 5	—
	196	5,000	91	2,300	51	1,300	237	6,000	1 / 5	—
	208	5,300	95	2,400	55	1,400	249	6,300	1 / 5	—
	213	5,420	97	2,440	56	1,440	253	6,420	1 / 3	—
	220	5,600	99	2,500	59	1,500	260	6,600	1 / 3	—
	232	5,900	103	2,600	62	1,600	272	6,900	1 / 3	—
	238	6,050	105	2,650	64	1,650	278	7,050	1 / 3	—
	244	6,200	107	2,700	66	1,700	284	7,200	1 / 3	2 / 5
	255	6,500	111	2,800	70	1,800	296	7,500	1 / 3	2 / 5
	267	6,800	115	2,900	74	1,900	308	7,800	1 / 3	2 / 5
	273	6,950	117	2,950	76	1,950	313	7,950	1 / 3	2 / 5
	291	7,400	123	3,100	82	2,100	331	8,400	1 / 3	2 / 5
	303	7,700	126	3,200	86	2,200	343	8,700	—	2 / 5
	314	8,000	130	3,300	90	2,300	355	9,000	1 / 3	2 / 5
	331	8,420	136	3,440	96	2,440	371	9,420	1 / 3	2 / 5
	343	8,720	140	3,540	100	2,540	383	9,720	1 / 3	2 / 5
	358	9,110	145	3,670	105	2,670	399	10,110	1 / 3	2 / 5
	378	9,620	152	3,840	111	2,840	419	10,620	—	2 / 5
	391	9,950	156	3,950	116	2,950	432	10,950	—	2 / 5
402	10,220	162	4,100	122	3,100	442	11,220	—	2 / 5	
414	10,520	166	4,200	125	3,200	454	11,520	—	2 / 5	
421	10,700	168	4,260	128	3,260	461	11,700	—	2 / 5	

1) includes standard load backrest with height 39.5 inches.

Technical data

as of: 03/2022

				Jungheinrich		Jungheinrich				
Characteristics	1.1	Manufacturer (abbreviation)		Jungheinrich		Jungheinrich				
	1.2	Manufacturer's type designation		ETV Q20		ETV Q25				
	1.3	Power type		electric		electric				
	1.4	Operator position		transverse seat		transverse seat				
	1.5	Load capacity at rated load center	Q	lbs	kg	4,400	2,000	5,500	2,500	
	1.6	Rated load center	c	in	mm	24	600	24	600	
	1.8	Load distance, center of drive axle to fork face	x	in	mm	17.7 ¹⁾	449 ¹⁾	17.7 ¹⁾	449 ¹⁾	
	1.8a	Additional load distance, mast extended forward		in	mm	9.1 ¹⁾	230 ¹⁾	9.1 ¹⁾	230 ¹⁾	
	1.9	Wheelbase	y	in	mm	60.2	1,528	64.5	1,638	
Weights	2.1a	Service weight including battery		lbs	kg	8,157	3,700	8,157	3,700	
	2.3	Axle loading, unloaded front (load) / rear (drive)		lbs	kg	4,991 / 3,166	2,264 / 1,436	4,991 / 3,166	2,264 / 1,436	
	2.4	Axle loading, extended, loaded front (load) / rear (drive)		lbs	kg	1,327 / 12,341	602 / 5,598	1,327 / 12,341	602 / 5,598	
	2.5	Axle loading, retracted, loaded front (load) / rear (drive)		lbs	kg	4,480 / 9,189	2,032 / 4,168	4,480 / 9,189	2,032 / 4,168	
Wheels Chassis	3.1	Tire type / material		Vulkollan®		Vulkollan®				
	3.2	Tire size, front (load)		in	mm	13.5 x 5.5	343 x 140	13.5 x 5.5	343 x 140	
	3.3	Tire size, rear (drive)		in	mm	14.0 x 5.3	355 x 135	14.0 x 5.3	355 x 135	
	3.5	Wheels, number, rear (drive) / front (load) (x=driven)				1x / 2		1x / 2		
3.7	Track width, load wheels (center of tires)	b ₁₁	in	mm	55.9	1,420	55.9	1,420		
Dimensions	4.1	Mast / fork carriage tilt forward / backward		degree		see mast table below				
	4.2	Lowered height		h ₁	in	mm	see mast table below			
	4.3	Fork free lift height (see tables)		h ₂	in	mm	see mast table below			
	4.4	Maximum fork height (see tables)		h ₃	in	mm	see mast table below			
	4.5	Extended mast height		h ₄	in	mm	see mast table below			
	4.7	Overhead guard height (top)		h ₆	in	mm	86.2	2,190	86.2	2,190
	4.8	Ground to seat index point		h ₇	in	mm	41.6	1,057	41.6	1,057
	4.10	Height of wheel arms		h ₈	in	mm	17.3	440	17.3	440
	4.19	Overall length (including forks)		l ₁	in	mm	96.0 ¹⁾	2,439 ¹⁾	98.9 ¹⁾	2,511 ¹⁾
	4.20	Length to fork face (includes fork thickness)		l ₂	in	mm	50.7 ¹⁾	1,289 ¹⁾	53.6 ¹⁾	1,361 ¹⁾
	4.21	Overall width, chassis / base legs		b ₁ /b ₂	in	mm	69.7 / 50.0	1,770 / 1,270	69.7 / 50.0	1,770 / 1,270
	4.22	Fork dimensions, length x width x thickness			in	mm	45.3 x 5.5 x 2.0	1,150 x 140 x 50	45.3 x 5.5 x 2.0	1,150 x 140 x 50
	4.23	Fork carriage type (to ISO 2328, class/type A,B)				2B		2B		
	4.24	Fork carriage width		b ₃	in	mm	32.7	830	32.7	830
	4.25	Overall fork width		b ₅	in	mm	14.0 / 29.5	356 / 750	14.0 / 29.5	356 / 750
	4.26	Baseleg opening (BLO)		b ₄	in	mm	37.0	940	37.0	940
	4.28	Reach distance		l ₄	in	mm	26.7 ¹⁾	679 ¹⁾	30.0 ¹⁾	762 ¹⁾
4.32	Ground clearance, center of wheelbase		m ₂	in	mm	3.7	95	3.7	95	
4.32.1	Ground clearance at lowest point			in	mm	2.2	55	2.2	55	
4.34a	Minimum aisle width, 48" x 40" pallet		Ast	in	mm	109.4 ¹⁾²⁾	2,780 ¹⁾²⁾	113.0 ¹⁾²⁾	2,870 ¹⁾²⁾	
4.35	Minimum outside turning radius		Wa	in	mm	68.5	1,741	74.5	1,893	
4.37	Overall length – to tip of wheel arms		l ₇	in	mm	77.0	1,957	83.1	2,112	
Performance Data	5.1	Travel speed, loaded / unloaded		mph	km/h	8.7	14	8.7	14	
	5.2	Lift speed, loaded / unloaded		ft/min	m/s	74.8 / 126.0	0.38 / 0.64	74.8 / 126.0	0.38 / 0.64	
	5.3	Lowering speed, loaded / unloaded		ft/min	m/s	108.3	0.55	108.3	0.55	
	5.4	Reaching speed, loaded / unloaded		ft/min	m/s	39.4	0.2	39.4	0.2	
	5.7	Gradeability, loaded / unloaded				7 / 11		7 / 11		
	5.8	Maximum gradeability, loaded / unloaded				10 / 15		10 / 15		
	5.9	Acceleration time, loaded / unloaded (10 meters)				5.4 / 4.8		5.6 / 5.1		
5.10	Service brake type				electric		electric			
Motors	6.1	Drive motor rating S2 60 minutes		HP	KW	11.40	8.5	11.40	8.5	
	6.2	Lift motor rating at S3 15%		HP	KW	20.8	15.5	20.8	15.5	
	6.4	Battery voltage, nominal capacity K5		V/Ah		48 / 620		48 / 620		
	6.5	Battery weight, minimum / maximum ¹⁾		lb	kg	1,967 / 2,326	892 / 1,055	1,967 / 2,326	892 / 1,055	
		Battery compartment dimensions (l / w / h) ¹⁾		in	mm	13.97 / 48.15 / 30.87	355 / 1,223 / 784	13.97 / 48.15 / 30.87	355 / 1,223 / 784	
Other	8.1	Drive control				Mosfet / AC		Mosfet / AC		
	8.2	Hydraulic pressure for attachments		psi	bar	2,176	150	2,176	150	
	8.3	Hydraulic flow rate for attachments		gal/min	l/min	5	20	5	20	
	8.4	Sound pressure at operator's ear (according to EN 12 053)		dB(A)		70		71		

1) Different battery compartment sizes change these values
 2) For floor storage sideways travel with 8 inches maneuvering space included

This specification sheet only provides technical values for the standard truck. Non-standard tires, different masts, additional equipment, etc., could produce other values. Rights reserved for technical changes and improvements.

The Jungheinrich Advantage



Five different steering modes



Easy-to-read color display



multiPILOT control (optional)

Operator awareness

- Electric braking distributed to all three wheels ensure that the ETV Q comes to a smooth stop, even in transverse travel.
- The overhead guard design for both standard and panoramic option provides a clear view of lifted loads.

High-performance mast

Jungheinrich masts provide outstanding stability and space utilization to high lift heights.

- Lifting heights up to 421".
- Low door clearance at great lift heights.
- Extremely durable due to cold-drawn mast sections.
- High residual capacities at high lift heights.
- Patented mast reach cushioning system (optional) for reduced mast oscillation during stacking and retrieval.

Fork positioner with extended fork widths (optional)

Optimum adaptation to different load widths for the effective transportation of long loads.

- Easy position adjustment with a push of a button.
- Straddle width up to 81 inches.
- Integrated design with narrower front dimensions for narrow aisle widths.
- Three variants available with different frame widths.

Easy-to-read color display

- Indication of direction of travel and wheel position.
- Indication of battery status and remaining capacity.
- Three selectable travel programs for individual adjustment to each need.
- Operating hours and time of day.
- Lifting height (optional).
- Load weight (optional).

Ergonomics

The operator position / stance provides a stress-free and ideal working space for high performance.

- Five buttons for the different steering modes.
- Comfortable seat that is adjustable to every driver (seat position, backrest, body weight).
- Many storage options
- Generous available space
- Three-phase control of all 3 steer wheels, switchable from 180° to 360° steering mode.
- Standard automotive layout of pedals.
- Standard key switch.

Assistance systems and options

For increased performance and less fatigue:

- positionCONTROL with the SNAP function enables easy and fast stacking without further buttons having to be pushed.
- Carriage and fork camera (options) with ergonomically adjustable monitor facilitates efficient stacking and retrieval.

soloPILOT control lever

The control lever is used for activating all hydraulic functions, selecting direction of travel and operating the horn:

- All the controls are within the operator's field of vision and are clearly designated for each specific function.
- Maximum throughput from simultaneous operation of two separate hydraulic functions (e.g. lifting and reaching).
- Convenient control of other attachments, e.g. fork positioner (optional).
- Precise operation from sensitive control of all functions
- Overall comfortable operator compartment, especially with padded armrest.
- multiPILOT (optional).

- Built in compliance with ANSI/ITSDF B56.1 design specifications in place at time of manufacture.

Parts when you need them

Jungheinrich's Parts Fast or Parts Free Guarantee ensures next-business-day delivery by 5:00 p.m. of all Jungheinrich parts in the United States, or they're free, including freight. For customers in Canada and Mexico, the guarantee ensures shipping of parts within 24 hours from the time the order was placed by the dealer. See your local Jungheinrich dealer for program details.

* Programs may be subject to change without notice and may vary by region. Please ask your local Jungheinrich dealer for complete terms and conditions.